

NATURALIST PROGRAMS

All programs meet at the parking lot at the south end of Somersville Road unless otherwise noted. Programs requiring registration list a course code number after the Naturalist name. Use this number when making reservations by telephone or at www.EBparksOnline.org. For more information on these programs, or about weekday school fieldtrips, call (510) 544-2750 or e-mail us at bdvisit@ebparks.org. Accommodations will be made for visitors with disabilities upon request.

Hazel-Atlas Silica Mine Tour

Saturdays & Sundays, March-November
Explore the underground through a guided tour; learn its history, geology, and technology. Ninety minute advanced registration tours are offered at 11am, 1pm, and 2pm. Call number below or go to www.EBparksOnline.org. A 10am tour is available to groups of ten or more on weekends (not available for online registration). First-come, first-served tours are offered at noon and 3pm. Purchase tickets at the visitor center. Must be at least 7 years old, parent participation required. Dogs are not permitted on the tour. Fee: \$3 per person. Parking \$5

Reg. Required: 1-888-EBPARKS

Sidney Flat Visitor Center

10am-4:30pm, Saturdays & Sundays
Stop by our park headquarters visitor center to view coalfield artifacts and photographs or say hello to our friendly resident snakes. Tickets for first-come, first-served Hazel-Atlas Mine tours at noon and 3pm may be purchased here (March-November). Please arrive at least one hour before tour time to sign-up. Participants must be age 7 or older. Parking \$5

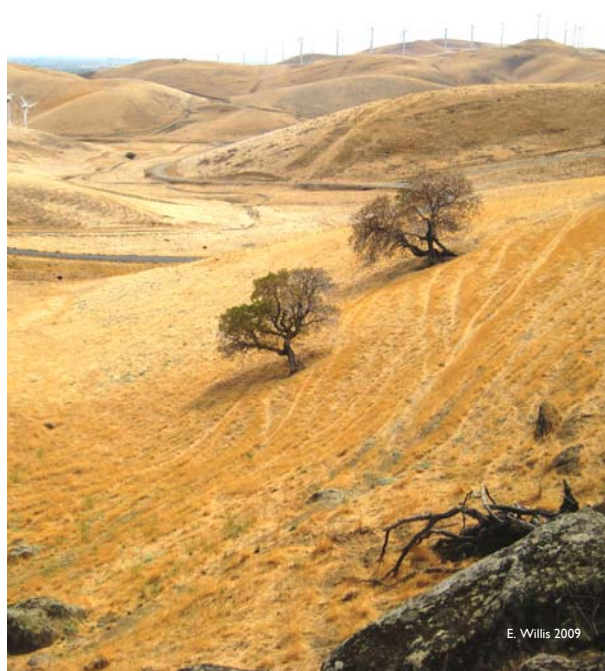
Webelos Geology Badge

9:30am-noon, Saturday, November 7
Interpretive Staff #21984
Hey scout leaders! Bring your den to Black Diamond Mines to earn their geology badge the fun and easy way. Programs are offered the first Saturday of the month (Mar-Nov) and you must register online or by phone. Parent participation is required and all participants must be 7 or older; space is limited to 15 people, including adults. (7+ yrs) Fee: \$3. Parking \$5

Reg. Required: 1-888-EBPARKS

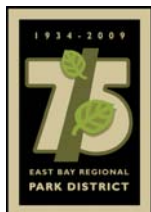
Vasco Caves Regional Preserve Hike

Round Valley Regional Preserve
9am-2pm, Saturday, November 21 #22599
9am-2pm, Sundays, November 1, 15, & 29
Interpretive Staff #22781, 22782, 22783
Behold Vasco's spectacular rock outcrops and vernal pools – seasonal home of endangered amphibians and fairy shrimp. This is habitat for eagles and various nesting and migrating raptors hunting bountiful prey in robust restored grasslands. Archaeological sites contain Indian rock art, part of a complex reaching back nearly 10,000 years. This Preserve is accessible through guided tours only, staging from Round Valley Regional Preserve and Brushy Peak Regional Preserve aboard District-provided bus transportation. Fee: \$30 (non-residents: \$34)
Reg. Required: 1-888-EBPARKS



E. Willis 2009

calendar of events



NATURALIST PROGRAMS

Rose Hill Requiem

10am-noon, Saturday, November 7

10am-noon, Friday, November 27

Bob Kanagaki

Visit a quiet hillside cemetery and recall the booming days of the Mount Diablo coalfield, the men who toiled in its labyrinthine workings, and their settlements in the surrounding valleys. Rain cancels. Parking \$5

Somersville Shadows

1-3pm, Saturday, November 7

Bob Kanagaki

Search through winter shadows to find remnants of a booming mining town in a now peaceful valley. (8+yrs) Parking \$5



Rain and Shine

10am-12:30pm, Sunday, November 8

Outdoor Ed

Only 2% of the planet shares our climate of sunny summers and mild winters. Discover how and why life survives and thrives in central California on a moderate two-mile hike.

Parking \$5

Candlesticks to Caplamps

2-3pm, Sunday, November 8

Outdoor Ed

A spark of genius? A flaming "safety" lamp? Discover the unique ways miners lit their deep, dark work spaces as we demonstrate mining technology from the 1700s to early 1900s. Meet at the park office. Parking \$5

Moon and Stars over Big Break

Big Break Regional Shoreline

6:30-8:30pm, Friday, November 13

Mike Moran

Grab an early-ish Friday dinner and grab a gander at the wonders of the night sky. We'll scope the heavens above the Delta for stars (11/13 & 12/18) and the moon (12/4). We'll have a couple of scopes, some binoculars, charts to guide our gazes (feel free to bring your own!), and some hot chocolate to keep us cozy. Dress warmly. Rain cancels. For info: (510) 544-2753.

Underground Picnic and Mine Tour

9:30am-1:30pm, Saturday, November 14

Bob Kanagaki

#22585

Avoid the muddy trails and let us chauffeur you to Eureka Slope and the Hazel-Atlas Mine where we'll have an underground picnic and tour the mining museum. Dress warmly and bring lunch. (7+)

Fee: \$3. Parking \$5

Reg. Required: 1-888-EBPARKS



Thursday Birding: Raptor Baseline

Marsh Creek Regional Trail

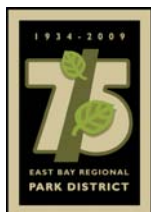
9-11:30am, Thursday, November 19

Mike Moran

#22596

The morning (eastern) side of Mount Diablo hosts a magnificent array of birds of prey; hawks, falcons, eagles. Help us document their variety and numbers in this fun, social citizen research project. No experience necessary—we'll teach you how to identify these birds. We'll meet at a different park on the last Thursday of each month (except November!) Join in for one or all.

Reg. Required: 1-888-EBPARKS



EAST BAY REGIONAL PARK DISTRICT
Black Diamond Mines Regional Preserve
5175 Somersville Road, Antioch, CA 94509

website: www.ebparks.org
telephone: 510-544-2750
e-mail: bdvisit@ebparks.org

New registration website: www.EBparksOnline.org

calendar of events

NATURALIST PROGRAMS

High-Tech Underground 1870

10am-noon, Saturday, November 21

Bob Kanagaki

A dark, dangerous job, coal mining has inspired some clever technology, particularly for lighting. See the products of this creativity at the upper picnic area. Parking \$5

100 Years Underground

1:30-2:30pm, Saturday, November 21

Bob Kanagaki

We'll take a digital journey back in time and review the lives of two generations of miners who toiled under the hills of Black Diamond from the mid-nineteenth century to the mid-twentieth. Meet at Hazel-Atlas Portal. Parking \$5

Fall Foothill Foray

Diablo Foothills Regional Park

9am-1pm, Sunday, November 22

Outdoor Ed

Seize autumn's grace and capture lasting memories of beauty on a crisp mid-November morning hike. We'll traverse 5-6 moderate to challenging miles to discover the natural wonders of the season.

Reg. Required: (510) 544-2768

Sage and Sandstone

1-4pm, Friday, November 27

Bob Kanagaki

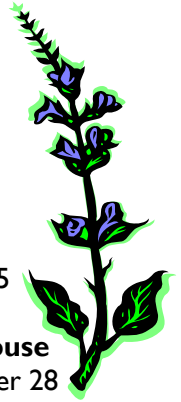
Avoid the mud and hike some sandy trails with some fascinating stories of man and nature. Rain cancels. Parking \$5

Hazel-Atlas Mine Open House

12-4:30pm, Saturday, November 28

Interpretive Staff & Docents

Free self-guided tours will let you explore nearly 1,000 feet of cool underground workings in this restored 1930s-era silica sand mine. This is the last Saturday the mine will be open for the season. (7+yrs) Parking \$5

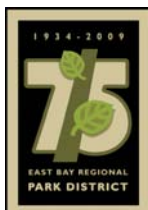


Get out, prepared!

Autumn is a wonderful time to visit your local East Bay Regional Parks. Be prepared, however, for inclement weather by dressing in layers and carrying a light jacket. Pacific storm systems begin to creep in this time of year and a beautiful warm day can turn cool and wet very quickly!



E. Willis 2009



EAST BAY REGIONAL PARK DISTRICT
Black Diamond Mines Regional Preserve
5175 Somersville Road, Antioch, CA 94509

website: www.ebparks.org
telephone: 510-544-2750
e-mail: bdvisit@ebparks.org

New registration website: www.EBparksOnline.org

calendar of events